

Special Writing Centre Technical Guide

.....	1
Special Writing Centre Technical Guide	1
.....	2
Introduction	2
Supported Operating System, Browsers, and Devices	2
.....	3
SEB Installation Instructions—Apple macOS	3
Step 1: Installing the Application	3
Step 2: Loading the SEB-Configuration File.....	4
SEB Installation Instructions—Windows	5
Step 1: Installing the Application	5
Step 2: Loading the SEB-Configuration File.....	5
How to Confirm SEB is Installed Successfully	6
Contact Alberta Education	8

Introduction

In order for students to write diploma exams on the new digital assessment platform for **the Part A diploma exam**, they need to have safe exam browser (SEB) installed on their Mac or Windows device. This needs to be confirmed by Special Cases before the student is approved.

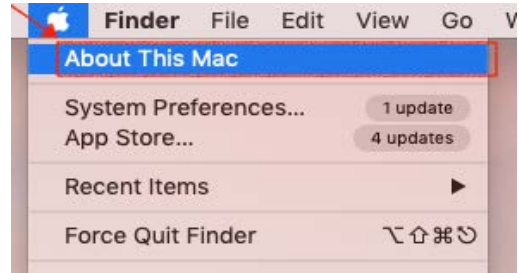
Supported Operating System, Browsers, and Devices

Operating System (and Devices)	Supported Browsers (listed versions are recommended)	Required Secure Environment
Windows (Microsoft)	Google Chrome - <i>version 62.0 to 115.0</i> Mozilla Firefox - <i>version 78.0 to 116.0</i> Microsoft Edge - <i>version 80.0 to 115.0</i>	Safe Exam Browser
Mac OSX 10.13.6 High Sierra or higher (Apple, MacBook)	Safari - <i>version 10.1 to 16.5</i> Google Chrome - <i>version 62.0 to 115.0</i> Mozilla Firefox - <i>version 78.0 to 116.0</i>	

SEB Installation Instructions—Apple macOS

Step 1: Installing the Application

1. Navigate to the **About This Mac** menu in your system menu bar to see whether the device is compatible with the SEB.



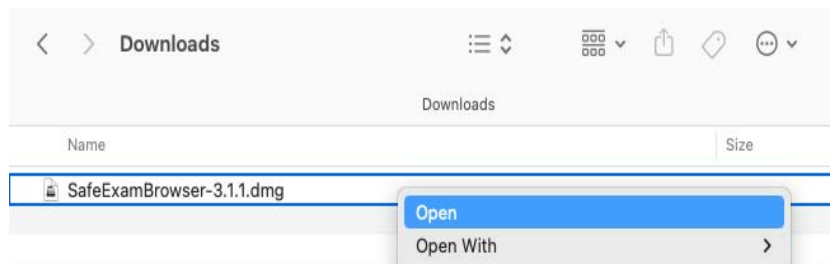
2. You will see a window listing the version of your operating system. The operating system must be higher than **10.13.6** to run the SEB for the assessment. In most cases, it is possible to upgrade the operating system at no cost, but it can take more than an hour.



3. Download the Safe Exam Browser here and double-click the .DMG file in the downloads folder.

https://d3azfb2wuqle4e.cloudfront.net/user_uploads/515770/authoring/SafeExamBrowser-3.1/1683328630748/SafeExamBrowser-3.1.dmg?school=60442

Note: The assessment is compatible with **version 3.1 of the SEB.**



4. Drag the Safe Exam Browser icon and drop it on the Applications folder icon to the right.



5. You can verify the installation by opening the Safe Exam Browser (via Spotlight). The SEB should open in a full screen with a message stating that it needs settings or a link to continue. This indicates that the installation of the program is complete.

Step 2: Loading the SEB-Configuration File

Note: The SEB configuration file is attached to the email you received from Special Cases. The exam will not work unless this file has been downloaded.

Double-click the **abed_default.seb** file attached on the e-mail from Special Cases.

SEB Installation Instructions—Windows

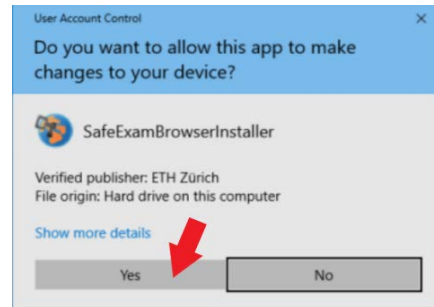
Step 1: Installing the Application

1. Download the Safe Exam Browser here, https://d3azfb2wuqle4e.cloudfront.net/user_uploads/515770/authoring/SafeExamBrowser-3.1/1683328630748/SafeExamBrowser-3.1.dmg?school=60442

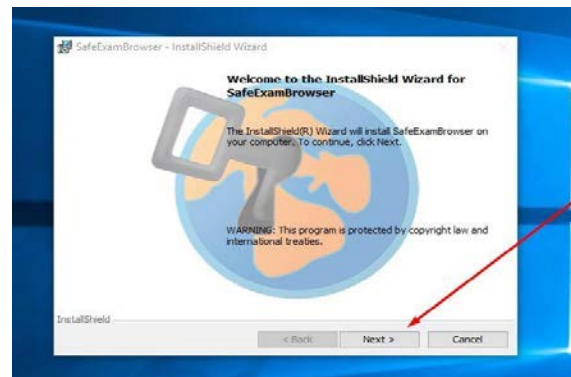
Note: The assessment is compatible with up to version **3.6.0** of the SEB.

2. Once the download is complete, run the SafeExamBrowserInstaller.exe file to initiate the installation.

You will be asked to allow the installation to make changes on your device. You must give this permission to proceed.



3. A window with an installation wizard will open. Click Next to proceed. Select "I accept the terms in the license agreement." Click Install and then Finish.



4. Click Start, and then find Safe Exam Browser to run the program.



5. The following alert may appear: "You have installed Safe Exam Browser (SEB), but it isn't configured yet." This indicates that the installation of the program is complete, but the program is not yet configured.



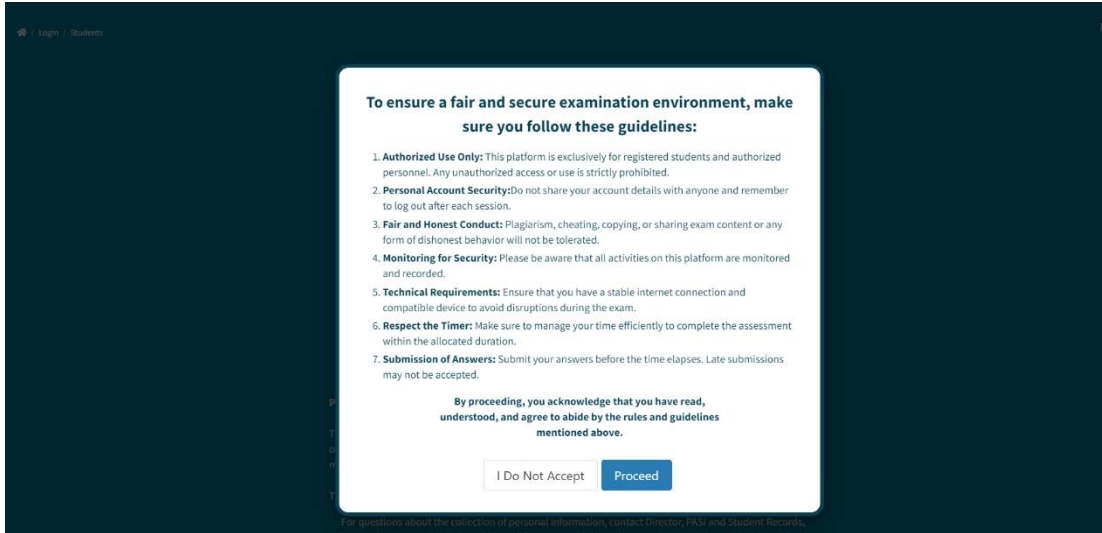
Step 2: Loading the SEB-Configuration File

Note: The SEB configuration file is attached to the email you received from Special Cases. The exam will not work unless this file has been downloaded.

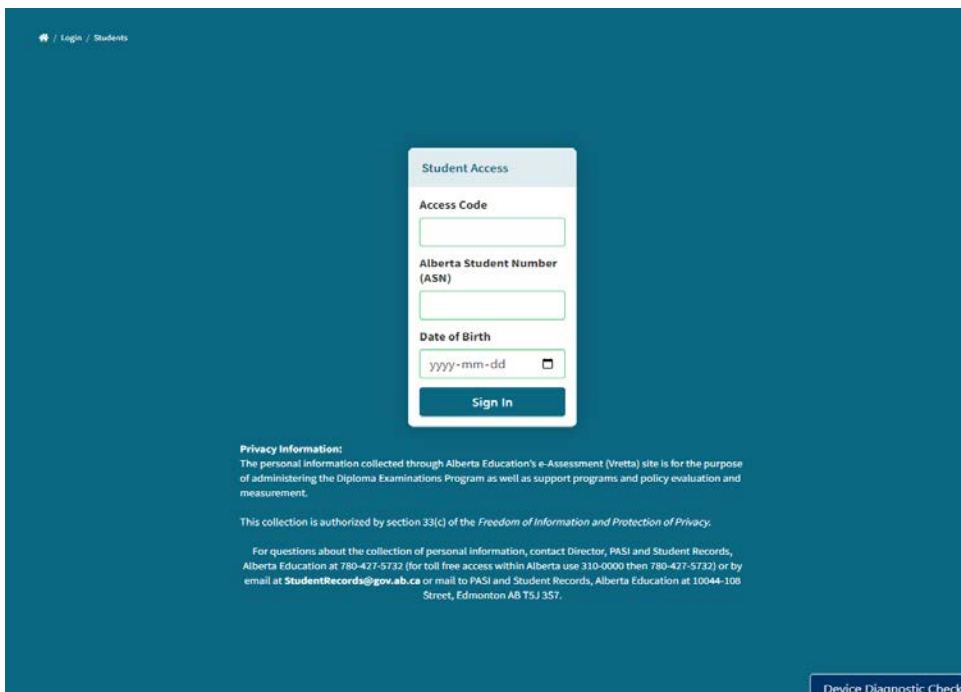
Double-click the **abed_default.seb** file attached on the e-mail from Special Cases.

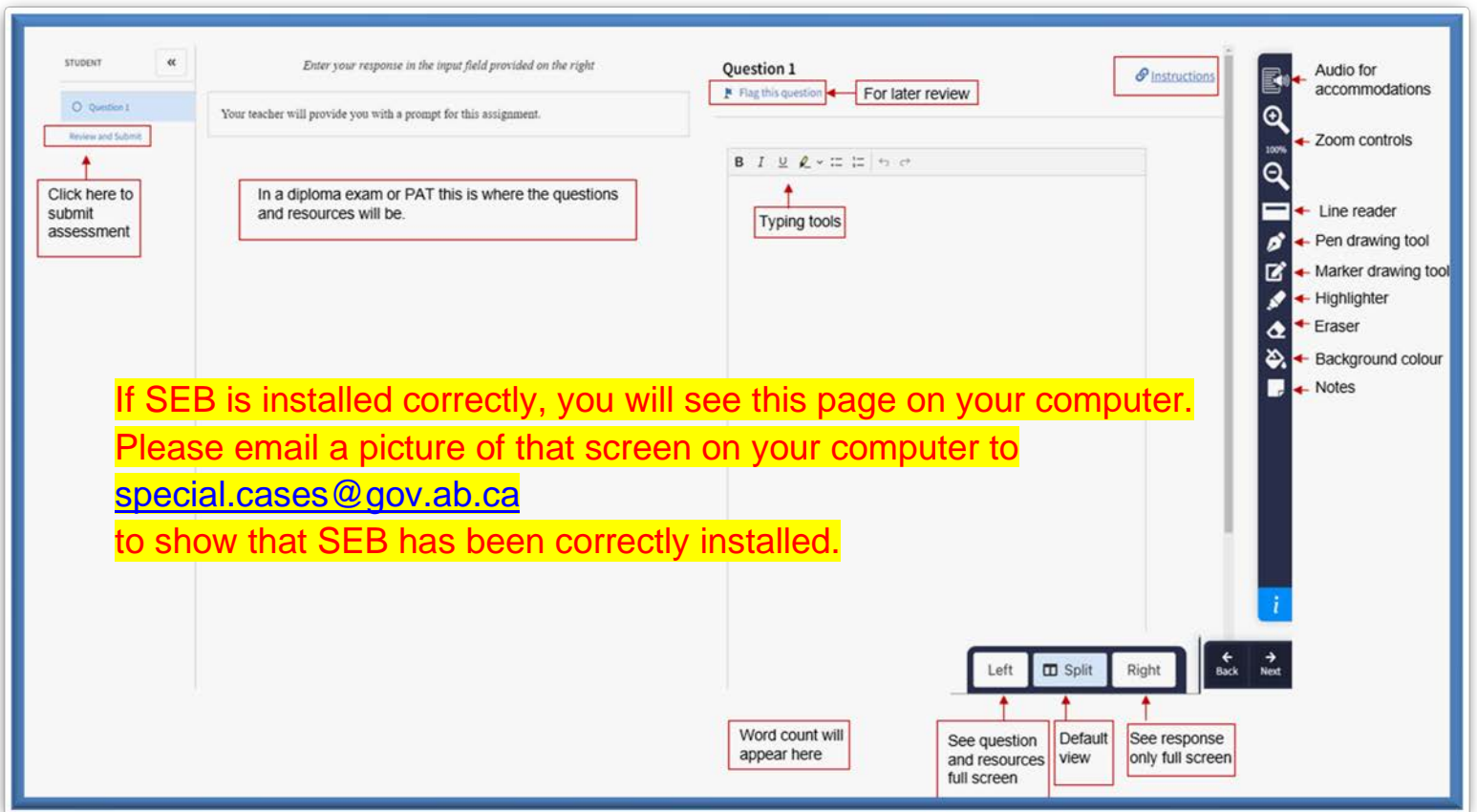
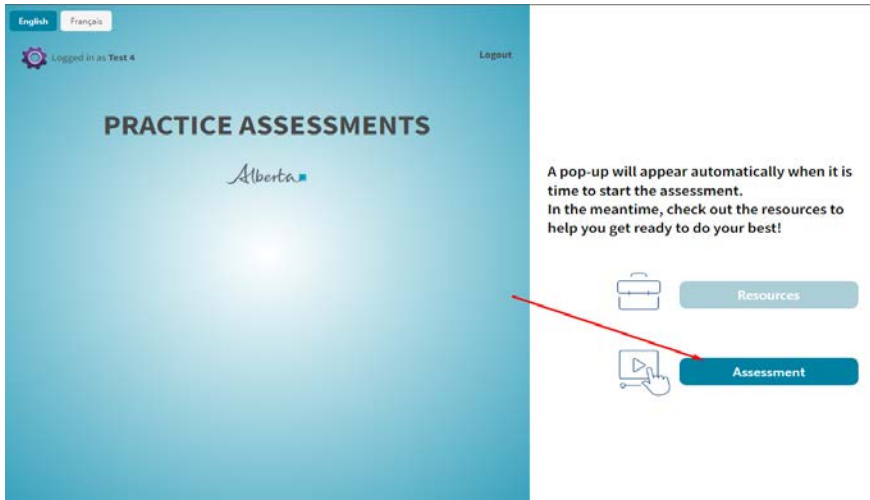
How to Confirm SEB is Installed Successfully

To show that you have SEB installed on your device, you need to log in to an assessment. Open the configuration file using SEB and you should see this page:



Log into the assessment using your birthdate, ASN and this Access code: **G5X4-B2X7**





If SEB is not installed correctly, you will get the error below. Please go through the installation page again.

You must use either SEB or Kiosk to complete the sample test or the operational assessment.

[Back to Resources and Assessments](#)

Contact Alberta Education

Special Cases

Special.cases@gov.ab.ca

780-415-9242

780-427-4215

For technical issues on the day of the exam:

(888)887-4870

Email: abed-support@vretta.com

For more information on using the online Digital Assessment Platform, including instruction videos, please see the Help Pages here, [Help | Vretta ABED](#).